

Gaucha Twilight Cross Country Meet at Mission Club Golf Course
(805) 733-3535

4300 Club House Rd, Lompoc, CA 93436
(Women's 6km/3.73miles & Men's 7.875km/4.89miles)

9/19/2025 5-7pm

Meet Director: Vijay Saxena vsaxena@ucsb.edu (650) 787 8963

Start Times: Men 7.88km 5:40pm start. Women 6km 6:20pm start

Practice: Course open at 5pm for practice

Course: 230m from start line to the beginning of the 1875m loop with timing pad at 1km split and start of the loop. Course Detail with pictures at the end of document. All grass course except for crossing golf cart path/sidewalk 7x per 1875m lap. We will put some mats down for an easier transition. Spikes are permitted. The finish is 145m from the breakoff point of the loop.

Parking: located at the address at top of document in front of clubhouse. Start line will be to the left of the clubhouse down the path at the beginning of hole 18. Finish is down the path to the left of the clubhouse at the beginning of hole 18. No charge for parking. Buses are allowed to park in the parking lot, please instruct bus drivers to stay on the right side when they enter.

Entries: can be done on Athletic.net starting August 18th, entries close Monday Sept 15th. \$500 per team of 14, \$40 per additional athlete. Payment due at time of entries close, no refunds (unless in the event of fire, or storm where it is unsafe to compete). This will be a scored meet. Please notify timer of any DNS or DNF's. Unattached athletes allowed at discretion of Meet Director, please contact at email and cell above with PR at race distance within the last calendar year (if Freshman, link to high school PR's), \$50 per athlete.

Athletic Trainer: We will have an Athletic Trainer available at the finish area. Athletic trainers will be on site for the competition - please bring your own tape, recovery modalities, etc.

Athletic Trainer Contact: Sienna Baldwin, ATC (siennabaldwin@ucsb.edu)

Spectators: will be allowed at no cost. Please bring your own chairs.

Bathrooms: We will have some Porta Potties available in the parking lot on the left side.

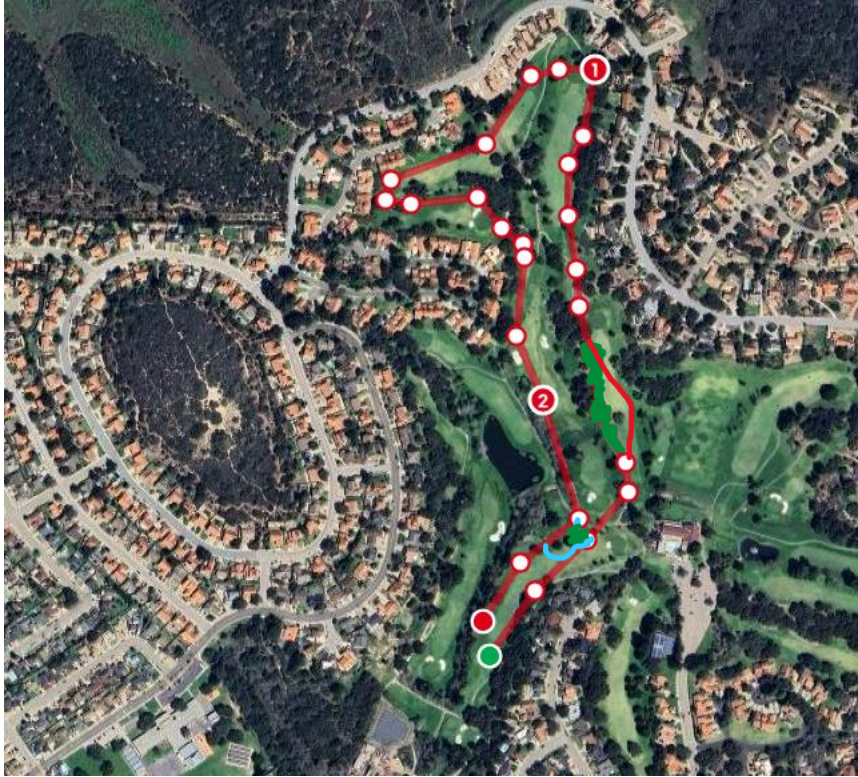
Teams interested in attending: Cal Poly, CSU Bakersfield, Cuesta College, and SD State (Women only program) to compete.

Place for Team Tents: next to hole 18 outside of the green.

Start Line: Wide start line (green dot on map) will need to use a chalk line, spray chalk, paint, or if there is a fire hose we can roll out for a line. Randomly assigned boxes for each team.

Emergency Access/Parking/Bus Parking: Parking available in front of clubhouse

Map & Course Narrative: Start is Green dot, Light blue is the end of the loop, Finish is Red Dot.



- Both Men and Women start and finish in the same location. The women 3x 1875m laps of map for 6km total; the men will do 4x 1875m loops.
 - Start and finish will be located near each other to make it easier for the timer to set up and also for spectators.
- Surfaces- green, fairway, rough/green, part of the course crosses trail/golf cart paths but we will put mats down for the 7 spots they cross. It is a relatively flat course with one hill leading up at the start of the loop of hole 10. A golf cart will pace to lead the way and a golf cart to stay behind the last runner.
- The Course is on the Back 9 holes (holes 10-14 for the loop, hole 18 for the start & finish).

Course Start- Begins at the Fairway of hole 18, starts to break to the right after the pole on the fairway (stay to the left of the pole before turning right) 130m and works up toward the hole and cuts towards hole 10. 230m to the start of the loop.



Cut across the path between the trees to the left of the bunker and run on the rough on the right side of the green and left of the path.



Cross over the path to the other green



When you get to the hole at the top of the hill under the willow tree it is about 500m



Watch your footing transitioning over the path to hole 11 green downhill.





Stay to the right of the green to avoid the wire fencing on the golf cart path; run between fairway and path on right.







When you get to the white & black stripe pole in the middle of Hole 11 fairway it is about 800m.



Run to the right around the putting green of Hole 11 (900m)



Cut to the left of hole 12 tee off area between the trees and cross over the path to the right side of hole 12 fairway. 1000m from the start.



Begin slight down hill next to hole 12, stay to the left of the trees on the right side of the fairway.





When you get past the fallen tree on the right that is the 1200m mark. The small white post past the fallen tree is the 1000m mark on the loop where we will get splits. (1000m split)



When you get to the left of the putting green of hole 12, go to the left in front of the cement roundabout, it will be a hard left



stay on the right side of the path and left side of the green for hole 13. You'll be on the left side of the bunker as you go around the putting green for hole 13.





Go between the trees where the grass meets the dirt and go to the right of the bathrooms (1500m)



Working towards hole 14, follow the grass golf cart path. Then run onto the hole 14 fairway left of the bunker.





Stay to the left of the big tree near golf cart path to run on the fairway for the rest of hole 14



they will cross the path behind hole 14 then bear to the right to go between the 2 white sheds. Then make a left around the last tree before the “rain bird” mechanical box and make a hard left back towards the clubhouse and start the loop again.





Red arrow indicates the direction for the finish, blue arrow is for continuing the loop.





blue line going around to start another 1875m loop.



Finish comes back towards start line (instead of making a left to do the loop you will stay straight back towards start line). You will pass white & black stripe pole on fairway then head up toward hole 18 tee. It ends up at the 18 green near the start (right next to the stump). It is 145m from the breakoff point of the loop to the finish line.

